

# PRS AUTO ZR Reactor

AUTO ZR-1.5/AUTO ZR-3.0

## Instruction



PRS.LTD

# Congratulations on your purchase of a AUTO ZR Reactor

Please read this entire AUTO ZR Reactor instruction manual carefully before using it

<http://www.ZE0prs.jp> ( AUTO ZR Reactor Instruction )

## Package Content

Firstly confirm the parts that AUTO ZR Reactor you have purchased, either check that the AC/DC adapter is included

- |                                   |                  |
|-----------------------------------|------------------|
| ①. AUTO ZR Body and inside tube   | ⑤. Valve         |
| ②. DC Motor unit                  | ⑥. Spring        |
| ③. DC Motor Gear head cover       | ⑦. Inlet adapter |
| ④. Outlet elbow 2pcs and pipe 1pc | ⑧. AC/DC adapter |

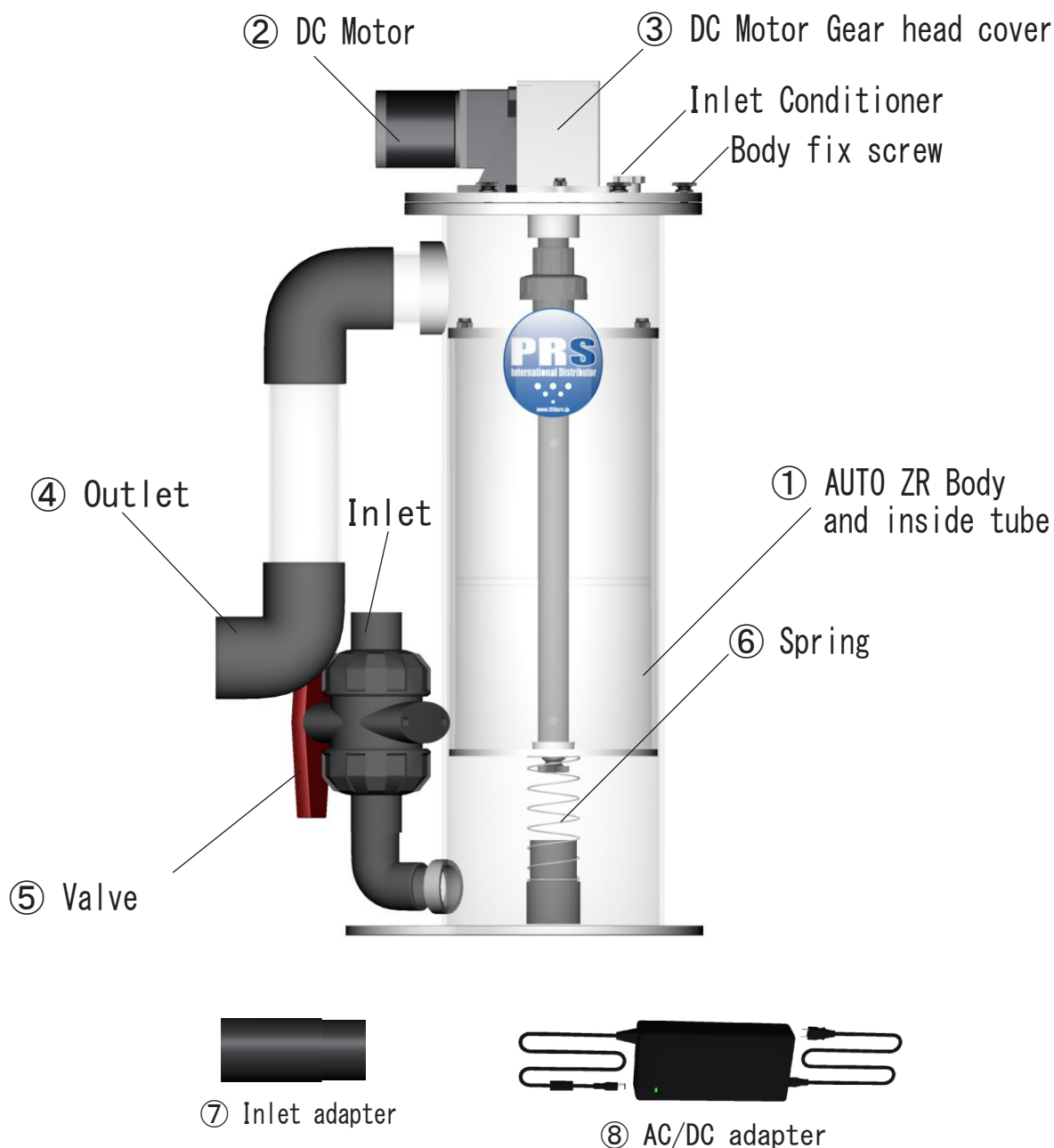


fig-1 AUTO ZR Reactor content

# Precautions

Take special care to follow the safety instructions listed below . Please keep these instructions for future reference

## Before Using

- \* Remove any plastic and sponges and please check there is no damage to the AUTO ZR Reactor body,inside tube,Motor and AC/DC adapter
- \* Please ensure that the Motor does not come into contact with any water and DC socket are easily damaged by water

## Safety

- \* If there is smoke or bad smell coming from Motor and AC/DC adapter, remove the plug from the socket immediately
- \* The power supply cord and Motor cord should be placed where they are not in danger of being stepped on or crushed
- \* Never take hold of the plug or cord with wet hands. always grasp the plug body when connecting or disconnecting
- \* This AUTO ZR Reactor is exclusively for use with aquarium systems. Please do not use for any other systems
- \* For safety purposes, do not modify or polarize the Motor and AC/DC adapter
- \* Please ensure that you keep the AC/DC adapter clean
- \* Only use the plug that is supplied with the Motor
- \* **NEVER OPEN Gear Box Cover! It' very Danger**

## Warning

- \* **PRS WILL NOT BE LIABLE for damage to aquariums, any water damage to areas surrounding the aquarium or any other consequential damages resulting from use of This AUTO ZR Reactor MAKE WAVES AT YOUR OWN RISK . Please see additional warnings on page 5**

User Memo :

Date of purchase :	_____
Dealer name :	_____
Dealer address :	_____
Dealer website :	_____
Dealer e-mail :	_____
Dealer phone no :	_____

Contact us : 81-4-2951-6603 [prs@ZE0prs.jp](mailto:prs@ZE0prs.jp)

# Installation

Please confirm that you have all of the parts before connecting AC/DC adapter and Motor

## AUTO ZR Reactor installation

1. First of all, remove Inside Tube Lid screw of Inside Tube. and Please introduce ZEOLite stone your wish (Max quantity : ZR-1.5 is 1.7L / ZR-3.0 is 3.6L)
2. Please connect DC Motor Unit and Inside Tube with Connect Union sufficiently
3. Please introduce inside unit to AUTO ZR body and fix AUTO ZR Body to inside unit by Body fix screw  
(Please make sure that there is Spring in the middle of the Inside Tube bottom or not)
4. After set outlet parts, please introduce AUTO ZR Reactor to the percolator
5. Please introduce the water from Inlet
6. Please insert AC/DC adapter pin plug into DC motor pin socket and insert plug into Timer  
(DC motor continuously for 3 minutes maximum)

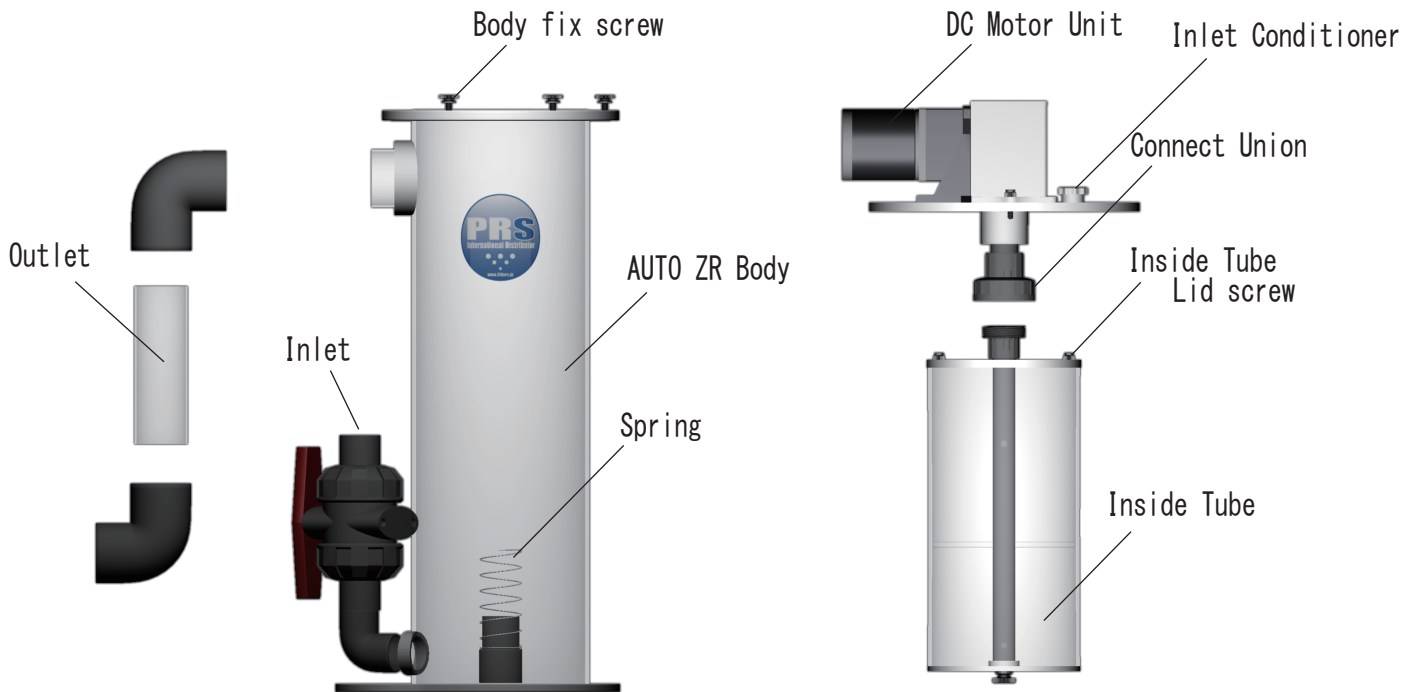
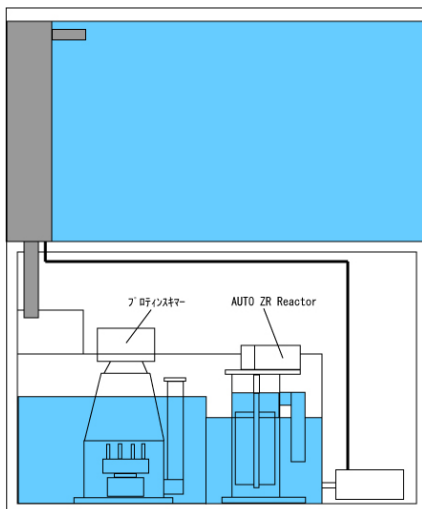


fig-2 AUTO ZR Reactor installation



※ We recommend to set AUTO ZR Reactor after Skimmer

※ We recommend to use 1L ZEOLite stone/400L water and inlet water speed 400L/h

# Description

## list-1 AUTO ZR Reactor

Model	AUTO ZR-1.5	AUTO ZR-3.0
Power Input (V)	AC100V-240V (50/60Hz)	
Output (V)	DC24V	
AC/DC Adapter current (A)	2	
Moter Rotation (rpm)	120	
Max Power consumption (W)	30	
ZEOLite stone (L)	1.5 (Max 1.7)	3.0 (Max 3.6)
Recommend Max water volume (L)	600	1200
Recommend Max pump flow (L/h)	600	1200
Inlet size	ANSI 1/2"	
Outlet size	ANSI 1x1/2"	

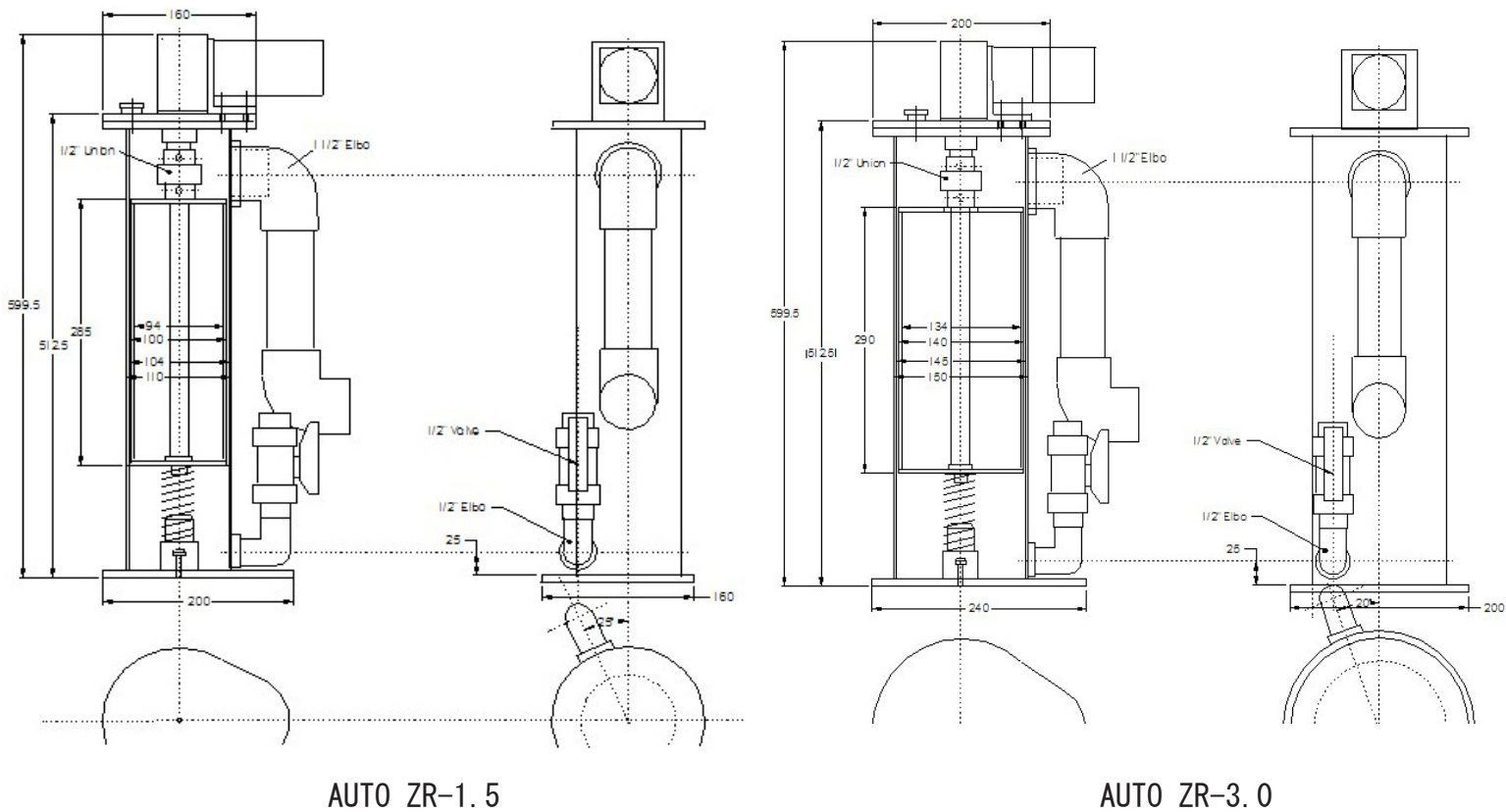


図-3 AUTO ZRリアクター寸法

## Limited Warranty

PRS.LTD Japan warrants to original purchaser that this product is free from defects in materials and workmanship for the period of one year from the date of purchase . This warranty does not apply to damage due directly or indirectly to misuse such as the product falling in the water, negligence or accidents, repair or alterations not carried out by us or due to lack of recommended maintenance . If a defect exists during the warranty period please return the product to us where free technical repair support will be provided

Shipping cost should be paid by purchaser so please contact us with your details prior to shipping and ensure that you have the courier details too

PRS.LTD Japan makes no warranty or representation either expressed or implied with respect to the products quality , performance , merchantability or fitness for a particular purpose . As a result this product is sold " AS IS " and you, the purchaser assume the entire risk as to it' s quality and performance

The warranty disclaimer and remedies set forth above are exclusive and replace all others oral or written expressed or implied. At no time will any PRS.LTD dealers , agents or employees be authorized to make any modifications , extension or addition to this warranty

Some states do not allow the exclusion or limitation of implied warranties or liability for incidental or consequential damages , so the above limitation or exclusion may not apply to you